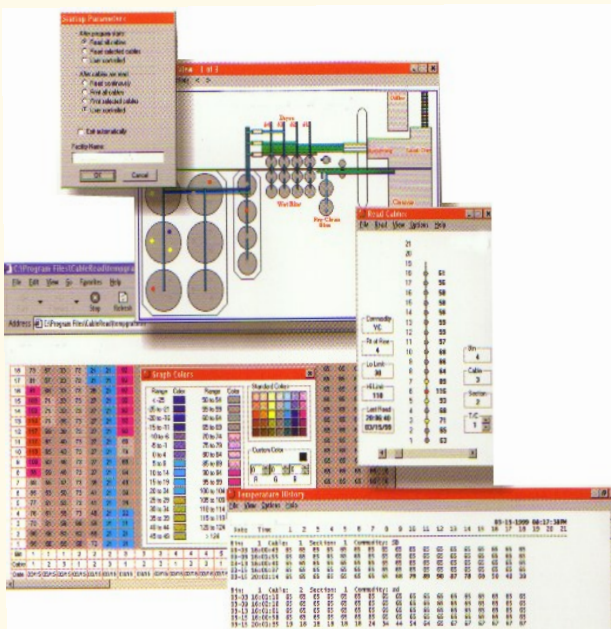




# PC3010

## Computerized Temp Monitoring System

- Utilizes Windows based software package.
- Capable of interfacing to existing remote switches.
- Interfaces to a combination of switch types.
- Built-in indicator lights and diagnostic circuitry allow for easy system verification.
- Automatic OHM reading capability and temperature retrievals.



- Windows software allows for almost all operations to be done using only the mouse.
- Software allows the user to easily read all cables or only selected cables, either automatically or manually.
- Readings can be taken automatically at pre-selected times chosen by the user.
- Automatic OHM reading capabilities allow for easy verification of switches, cables and leadwire, and pinpointing problems.
- Color coded reports quickly identify temperatures that are hot, cold or have risen excessively from the previous reading allowing users to identify potential hot spots before they become a problem.
- Reports allow for printing temperature history for easy identification of when the hot spot developed. Up to 100 readings may be saved.
- The Note Pad area for each cable allows the operator to keep specific information pertaining to that particular cable.
- Optional 3D graphics, customized to the users facility, allow for quick and easy identification of hot spots. Display the entire facility or specific bins, and rotate the display on a vertical and/or horizontal axis for full vision of all temperature conditions.



P.O. Box 468 • 1600 Hudson Avenue West  
 Spirit Lake, IA 51360  
 800-438-8367 • 712-336-0199 • Fax 712-336-0299  
 Email: TSGC@TSGCinc.com • www.TSGCinc.com

• GRAIN STORAGE MADE BETTER •